



MARCH 2014

PAPAROA's FIRE FORCE NEEDS YOU!

Paparoa VRFF is a rural fire force, which operates under the Forest and Rural Fires Act. Our main focus is therefore scrub/vegetation and forest fires. We also provide back-up for the NZ Fire Service and play an important role in locating and providing water for them at structure fires where no hydrants are available.

To continue being an effective Fire Force, Paparoa VRFF really needs another few members. If you are interested please call 09 431 6668.

Valuable training opportunity for Volunteers - old Paparoa residence succumbs to the flames

"C'mon Paparoa, the Fire Force could really use your help!!"



Paparoa's Volunteer Rural Fire Force attends Training Fire



TRAINING FIRE - PAPAROA VILLAGE - 8th FEBRUARY

Saturday 8th February brought a valuable training opportunity for our local Fire Force as we said goodbye to an old Paparoa residence. The owners of the property at Nurse Cavell Lane needed the old cottage removed and, they were kind enough to offer it to the Paparoa VRFF for a training exercise.

We got in touch with the Maungaturoto NZ Fire Service and, together we organised a morning of fun and learning.



Furnishings, fittings and floorboards were removed for recycling, to be replaced with old ply and GIB. Windows were covered, safety checks were done, and the training began.

Crews of 2-4 Fire Service members, along with their trainers, took turns at being in the house while controlled burns were lit. It was a great chance for them to see how fire spreads and how smoke behaves under different circumstances. Often when they arrive at a fire, it is already well involved so this was a wonderful opportunity.

While Fire Service did their thing indoors, Paparoa did theirs outside. Controlling the flames that came through the windows, providing water, and monitoring the outdoor areas.



After we had learned what we could from the old building, one last fire was lit in a spectacular display that attracted dozens of onlookers.

Sad as it might have been for some residents to see it burn, we hope you can be happy that the local emergency groups were able to gain essential knowledge and experience through its departure.

We would like to thank the owners of the property for providing us with this chance to learn and expand our skills. We would also like to thank Fire Service and their Trainers who came up from Auckland. It was awesome working with you on this exercise.

Yvonne Yorke

HERE'S WHAT YOU NEED TO KNOW

TO BECOME A VOLUNTEER:

You need to:

- Live in or close to Paparoa
- Have your own transport
- Be any age from 16 up
- You could be a driver
- Man the pumps
- Or get on the end of a hose

INSIDE

- WAG update.....3
- A&P Show report + pics..... 4-5
- Vision for Paparoa6
- ORT presents 'Allo 'Allo7
- Spotlight On Jasween Gill.....9
- Rally news10
- Heritage Hotspot12
- Out & About..... 14



Paparoa Press

PUBLISHED MONTHLY BY
Progressive Paparoa Inc. (PPI),
for Paparoa, Pahi, Matakohē,
Whakapirau and Tinopai.

CIRCULATION 960

CONTACT US

- paparoapress@orcon.net.nz
- ph 09 431 7144
- PPI, PO Box 107, Paparoa 0543
- www.paparoa.org.nz

ADVERTISING

Rate Card available by email
Booking & Copy deadline:

15th of month

Publication date 1st of month

Privet Post

Following our front page article on the privet eradication program, asking for volunteer support, there's been deafening silence.



It is quite disappointing that no-one has come forward to help the Lions and Rotary clubs in this valuable community project.

Yes it's a big task, yes it will need years of follow-up but of course we're all too busy right now to help, but it would be nice if 'they' got on and did the job.

If you think you can spare a few hours please ph Stephen Findlay on 431 6148 or Terry Hanna on 431 8354 or 021 365 373. PP

PAPAROA FARMERS MARKET
LOCAL GOODS DIRECT FROM THE PRODUCER



Fortnightly **SATURDAYS**
gam-noon at the Village Green

March 8th 22nd
April 5th 19th

ph Mary 431 7123 or Graham 431 7209

Phantom Bikies ride from Cape Reinga to Bluff



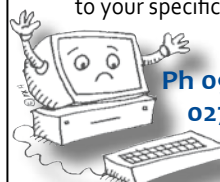
Sighted recently at Paparoa Camp Ground - they are called the Phantom Riders, a group of 13 bikers and a van driver who are in their 50's, all riding mates from Dunedin.

They're doing what they call 'The Grand Tour' riding from Cape Reinga to the Bluff in 17 days averaging 160kms a day, a total of 2633kms.

They're doing it because they want to, and before they get too old to be able to. They have already done the South Island twice. PP

R & D MACDONALD COMPUTERS

Call Ross with your computer problems & repairs
He'll even build a computer to your specifications



Ph 09 431 6221
027 932 8114

email: ross@paradisebreeders.co.nz

HSB BUILDERS LTD



Fixed priced
housing
contracts
Roofing

www.hsbbuilders.co.nz

- Hayden 021 506 260
- Ph (09) 431 9143
- team@hsbbuilders.co.nz

Website progress



Progressive Paparoa Inc. would like to thank the people who responded to its request for help to develop the Website.

With five offers of help the task is now to see which options will work the best. It's great to see so many come forward to assist.

HOOK, LINE & SINKER

Gravy tells us he has been able to catch his limit of good sized snapper every time he goes out.



He had a good morning at Batley a couple of weeks ago and caught 15 really nice fish, mostly snapper. There are also a few Gurnard, but not many Kingis or Kahawai.

This season is the best he has seen for fish within 800m or half a mile off the Pahi jetty. He said "The secret to good fishing is to find where the fish are".

He said that the scallops are not the best at the moment and he would recommend that they be left till next season to fatten up a bit. PP

You won't go away hungry!

THE CRUISER BAR and GRILL

- Wholesome, affordable meals
- Fully licensed
- Family friendly
- Inside-outside dining
- Private functions

In the
village,
Paparoa
Valley
Road



OPEN WEDNESDAY to SUNDAY, 5pm 'TIL LATE

ph 09 431 6918

WAG 14 off to Flying Start

After the success of Paparoa's Wearable Arts Gala last August it was going to be hard to keep up the momentum as some of the old committee felt like a break. However a new committee has been formed with a great deal of talent and enthusiasm and has started work.

Saturday 23 August is the proposed date for a matinée and evening show. The categories and criteria have been reworked and the prize money is to be increased as well.

The major prize will again be a trip for two to WOW in Wellington with all expenses paid. Last year's winners really appreciated the opportunity to experience



that world class show. WAG is designed for anyone with even the slightest creative talents. Entry is easy, not expensive and the experience always very rewarding.

So why not give it a go this year? Your efforts will be recognised by experienced judges and you may even win the big prize. Entry forms are available from bettycairns@xtra.co.nz, ph 431 6515, or from local stores.

Make 2014 the year you extend your creative streak by entering Paparoa's Wearable Arts Gala!

Pictured: WAG 2013's *Nga Rangatahi*, winners of *Pacifica* section and 2nd *People's Choice* in the Matinee Show

PAPAROA RACQUET SPORTS

TENNIS:

The long dry summer has been great weather for tennis, and some regulars are making the most of it. The new wind break sponsored by HEAD tennis has been very helpful on the windier days. There's nothing like a game of tennis on a lovely summer evening. So come along on Tuesday evenings or Friday afternoon if that suits you better.

We have been fortunate to receive another grant from NZ Community Trust towards the cost of specialised coaching so Grant will be at our courts on Saturday mornings on 1, 15 and 29 March.

TABLE TENNIS:

Tuesday evenings from 7.30pm sees a mixture of young and old(er) with our best player being well into his 70s! There is plenty of room for more players.

If you have ever wanted to play tennis or table tennis come along as we are very friendly and helpful to beginners or those who haven't played for many years.

BADMINTON: will be starting again Thursday 20 March at Paparoa Hall. Contact Pete 431 6822.



Coaching session at the courts with Grant

g.a.s. Paparoa



- Petrol, Diesel & Oil
- **LOWEST** priced milk
- Great variety of Bait



Local tides for March 2014

MARCH TIDES - CALCULATED for PAHI-WHAKAPIRAU

DATE	LOW	HIGH	DATE	LOW	HIGH
1st	5.59pm	12.01pm	17th	6.32pm	12.35pm
2nd	6.45pm	12.46pm	18th	7.06pm	1.08pm
3rd	7.29pm	1.31pm	19th	7.41pm	1.42pm
4th	7.47am	2.14pm	20th	7.56am	2.18pm
5th	8.31am	2.56pm	21st	8.36am	2.59pm
6th	9.15am	3.40pm	22nd	9.22am	3.46pm
7th	10.01am	4.26pm	23rd	10.17am	4.43pm
8th	10.54am	5.18pm	24th	11.22am	5.08pm
9th	11.56am	6.19pm	25th	12.36pm	7.06pm
10th	1.08pm	7.30pm	26th	1.52pm	7.46am
11th	2.20pm	8.21am	27th	3.00pm	8.58am
12th	3.19pm	9.24am	28th	3.59pm	9.59am
13th	4.07pm	10.13am	29th	4.50pm	10.52am
14th	4.47pm	10.54am	30th	5.38pm	11.39am
15th	5.24pm	11.29am	31st	6.22pm	12.24pm
16th	5.58pm	12.03pm			

John & Nicki Eddy
09 431-6302

Mon-Fri 6.30am-6.30pm
Sat 7am-6pm; Sun 7.30am-5.30pm

FENCING CONTRACTOR

For all types of fencing, stockyards, handyman work, tree felling, tractor work etc.



phone
Mike 09 431 6509
027 203 2694

email
mandsplunkett@slingshot.co.nz

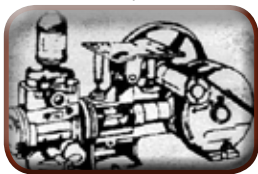
FARMWORK SERVICES LTD

REMEMBER!

▼
▼
▼
Your
pets
need a
holiday
too

NEEDHAM PUMP SERVICES

For all Water Pump Supplies
& Repairs



09 431 8235

Ross 027 669 4464

Daryl 027 271 1961

32 Whaka Street, Maungaturoto

Maungaturoto Pharmacy

144 Hurdall Street, Maungaturoto
Phone 09 431 8045
Fax 09 431 8808
Hours: Monday-Friday 9am-5pm

**For all your health
and beauty needs at
competitive city
prices and with
friendly country
service – call in and
talk with Phil, Karen,
Gayle & Shiree – if
we haven't got it, we
will do our best to get
it!**

Don't forget – if
you are unable to
collect your
prescriptions
from the
Pharmacy we can
deliver daily to
Paparoa &
Matakohe



**ENJOY THE BENEFITS OF SHOPPING
LOCALLY AND SAVE PETROL
– WE ARE WORTH THE VISIT!!**

And now we reward you for shopping with us -
ORRS Reward Points - your ORRS Rewards Club Card can be
used at all five ORRS sites

ORRS Rewards Club

Maungaturoto • Whangarei • Ruakaka •
Dargaville • Ruawai

The Paparoa Show

North Kaipara Agricultural Association President, Kate Battensby, was delighted with this year's show day. The day dawned bright and sunny after threats of rain. Exhibitor, participant and visitor numbers were all up on recent years, especially in cattle, goats, wood-chopping, team roping and equestrian. Kate said it was great to see so many families enjoy the day and the trade site people were pleased with interest shown.

The entertainment lent a merry air. Children made the most of the bucking bronco, the V8 simulator was a first-time hit – the committee is hoping to build on this type of 'fun of the show' next year. Thanks to 'on the



microphone' boys Adrian Hook and Kieran Foster – who kept the flow going, and entered the Talent Quest with their own song based on Paparoa and A&P shows in general. Special mention to two generous new sponsors: Shane Powell who gave a \$500 cheque to the woodchopping section and Gerard Sullivan for his \$250 to the artwork special section.

The indoor exhibits in the hall made a brilliant scene – thank you to everyone who helped: stewards, judges and entrants. And special thanks to Tina Ball who has been organising the Children's Section for ten years! PP



Cattle

The cattle section of the Show saw a variety of breeds exhibited with a return of some of the traditional British breeds. Although we missed seeing Lockwood Smith's Belgian Blues, numbers were still very good and the animals attracted plenty of public attention.

There was a pleasing increase in the number of young people

taking part and the Malcolm Hutchings Young Handlers' section saw a good improvement in technique. A spin-off from this competition is the decision to hold a training clinic for

also growing in popularity.

Willowcreek Salers, shown by Karen and Bruce Woolley and family were dominant in the placings for the larger breeds, taking out the Supreme

Champion with their lovely cow Willowcreek Kansas, while Rosalie Bakker's Rakaunui Dexters turned out in force in the smaller beef breeds. Other breeds which made a good impression were White Galloways, Limousin, Angus, Charolais, Shorthorn and Highland cattle.

Excellent Judges and wonderful Stewards made the day run smoothly with everyone happy and keen to come back next year. It would be great to see more of the bigger breeds return to the competition and we would encourage more lifestylers to look at the Small Beef breeds section.



Supreme Champion Beef Animal -
Willowcreek Kansas exchanges kiss
with owner / breeder, Karen Woolley

Young Handlers later this season with organisation underway. Interested participants can either ring (09) 430 2420 or email riverlets@gmail.com for further information. The Yearling classes, for Calf Club exhibitors to bring last year's calves along, are

Dairy Goats

Last year saw a return of Dairy Goats classes to the show with a good number coming along. The same competitors returned this year, along with some new ones and provided an interesting viewing for the public. There was keen competition and a high standard among the exhibits with Greendale Stud, owned by Robert and Margaret Greenough taking out the North Kaipara Transport Cup for Champion Buck and Bluelodge Stud, owned by Wendy Millward winning the Val McMillan Trophy for Best Dairy Doe.

Pet Goat classes were added this year, including an obstacle course! It is hoped that more youngsters will be inspired to take part next year. Anyone wanting to know more about this part of the competition can ring (09) 439 1507 or email cleary@igrin.co.nz.

Some exhibitors travelled quite a distance to attend the show and we thank them, along with local breeders and owners for their support.

They enjoyed the day and look forward to returning next year.

In the Hall ...

What a magnificent spectacle to behold! The tables were laden with a huge variety of items: the vegetable section was fantastic thanks to some very good local gardeners – it was good to see Trevor Brljevic enjoying a bit more competition! Peter Williamson's vegetable collection was great. Trevor won the most entries and most points overall in the indoor section - an amazing effort from our Show Patron.



Prize produce in the Indoor Exhibition

Dahlias were beautiful as always - but there was a much smaller floral art section. Maybe the dry weather didn't help. Next year a larger section is planned for the roses.

The home brew section was closely contested with Doug Shaw having the best overall wine and John McMurray taking the best beer as well as the best overall.

Doris Carrick won the overall points in the knitting and crochet with her beautiful work. Janice Wilson

produced beautiful sewing to win most points in this section while the baking and preserve section was hotly contested with Jan Robertson coming through to win. A really amazing display of beautiful photos, painting and patchwork with Sarah Wells one of the top prize winners in this section. The special class "A local seascape in any art medium" attracted many very good entries: First prize went to Maxine Worthington, 2nd to Christine Yardley and 3rd to Ngaire Patterson.

Annmarie Holst made a great effort in the children's section taking out the prize for the most points overall. Lastly the schoolwork - what a beautiful display as always by our younger students. This work is a credit to the great teachers at our local Primary Schools who organise and collect the children's work.

A huge thank you to all the volunteers and competitors who make this Show possible.

Stella Clyde, Indoor Steward, A&P



Primo Potted Preserves



Children's Art



Show Patron Trevor Brljevic congratulates Annmarie Holst, winner of 'Most Points' in the Children's Section



Sponsor of 'Local Seascape' special Art section, Gerard Sullivan pictured here with winner Maxine Worthington. Maxine's winning work below.



PAINTING

Building Gib Stopping

- Alterations
 - Maintenance
 - Interior & Exterior
- anything considered

CAN WE FIX IT? YES WE CAN

PATRICK JOHANSON, FISHER ST, PAHI
021 154 5679 09 431 6020
patpats@farmside.co.nz



Matakohe School won the Trophy for Years 7 & 8 Schools for the second time, presented here to Emma Philips

Crompton Engineering Ltd

Phone/fax 09 439 2393
31 Jellicoe Road, Ruawai



Hay Racks
- covered
or uncovered

Palm Kernel
Trailers



website: cromptonengineering.co.nz
email: crompton.eng@xtra.co.nz



Rhoda Morrison

Your Full Time Local Real Estate Agent

Top Rural Salesperson
last 3 years Region 1

Listing to sell NOW

09-431 6912
0274 800 691

rhodamorrison@xtra.co.nz
www.roperandjones.co.nz



first
national
REAL ESTATE

Roper & Jones

Dargaville Realty Ltd
Licensed REAA 2008



Where are we heading?

The time is now!

A couple of months ago, we asked for input to 'A vision for Paparoa beyond 2020'. The response? Dismal! The next issue featured some very telling words from a lifetime resident, from which there can be no doubt that, like many other rural communities, the current vision must be that Paparoa is in danger of fading away. This despite another recent feature: Has Paparoa a Special Community Spirit? Which rightly lauded the co-operative efforts within the community. Again we invited suggestions for future inspiration but sadly, no response.



◀NEWSFLASH▶ March 2024▶

PAPAROA YOUR Retirement Village?

No age diversity to mar your peace and quiet??

The village developed especially to attract those who want that 'getaway from life'.

Meals on Wheels (we come to you). Due to the unfortunate closure of the Paparoa Primary School, we are now able to offer an exciting new service 'Buddy Dine' eat and reminisce with your friends in the refurbished classrooms. Hourly village shuttle available. Pensioner rates apply to all services.

Club Nite, every night!

All your favourite non-strenuous activities.

UPDATE! UPDATE! Negotiations with Transit New Zealand are proceeding well, the village bypass will be built in conjunction with the two-way bridges at Matakahe, when finance becomes available. This will enable restrictive car access measures to be put in place for your safety.

(Visitor permits available)

Remember to tell all your old friends, there are always places on offer in Paparoa!

Paparoa, the dying backwater, the way you want it
Or Is It?????

It would be safe to assume that the Northland councils will soon be amalgamated, which will effectively mean the marginalisation of smaller communities. Clear ideas and definite community goals should give us a better chance of being effectively represented. The alternative is to let 'them' create a vision for us. Retirees put a lot of effort into this community but they are not the inheritors of the future!

Fresh and progressive ideas, more relevant to future lifestyles are needed now. The lure of the bright lights for younger people is inevitable, But we want them to come back!

*Input
from all age
groups is
relevant*

So why not ask them what would 'bring them home'? Input from all age groups is relevant, so how about a community brainstorm? You might be surprised by the differing values of another generation. You can email your ideas to the 'Press' or there will be a suggestion box at the bacon stall at the next market. If you only want to leave your name and number, that's fine, we will ring you for a chat. Come on folks Paparoa has had a great past, this is your opportunity to design an even greater future. *Let's put Paparoa back on the map!* PP



TAKEAWAY MENU

BURGERS

Cheese	\$7.50
Prime Angus Beef	\$7
Chicken	\$6
Veggie	\$6
Fish	\$6
Bacon & Egg	\$7

PIZZAS

BBQ Chicken	Ham & Pineapple
Meatlovers	Hearty Local
Seafood	Vegetarian
Supreme	Cajun Chicken

Small \$15 Large \$20 Available every day

EVERYTHING ELSE

Battered Fish	\$3.50	Battered Mussel	\$1.50
Hotdog on a stick	\$2	Potato Fritter	\$1.50
Chips min	\$2.50	Sausages	\$2
Mussel Fritters	\$4	Wedges	\$6
Curry Roll	\$2.50	American Hotdog	\$4.50
Spring Roll	\$2.50	Battered Sausage	\$2.50
Battered Oyster	\$1.50	6 Chicken Nuggets	\$3.50
Battered Scallop	\$1.50		

HOURS: Wed, Thur, Fri 4pm till late / Sat & Sun 8.30am till late

09 431 7359

M.K. Weber Sawmiller

CONTACT Marek by phone or drop into the mill
94 Tinopai Road, 09 431 7170

WE SELL:

- Pointed Electric Fence Battens
- 1st & 2nd Grade Fence Battens
- Retaining Wall Timber
- Weather Boarding
- Rough Sawn, Gauged & Dressed Timber
- Private Milling Undertaken



Timber cut to ANY size to suit your order



Motoring Matters



The early days of Rallying

Thinking of the major international car rallies that have passed through Paparoa during the last few years brings to mind the purpose built cars with very powerful engines, roll cages and elaborate seat belts to protect their occupants- drivers and co-drivers dressed in flame retardant overalls, the latest crash helmets adorned with microphones and earpieces so they can talk to one another over the noise that makes normal spoken communication impossible.

In the early fifties, things were very different, the cars were essentially the same as you or I could buy from the showroom. There were no safety features whatsoever, no seat belts, no helmets, and the preferred dress was normal daywear, maybe a suit, maybe a sports jacket and slacks.

Yet, in many ways rallying was more dangerous than today. They ran in daylight or darkness on roads open to normal traffic. On a weekend they might meet a family out for a Sunday jaunt in an old Ford, or, in the early hours of the morning, the milk tanker out on its early morning milk run.

This applied to not only the locally organised rallies, but also the famous international rallies like the Monte Carlo, which incidentally was much longer than its modern version with multiple starts from all over Europe, Edinburgh in Scotland, Stockholm in Sweden, Lisbon in Portugal.

I wonder if the modern way is the right way? I and many others avidly followed the long distance rallies, there was a real sense of adventure as we pictured the cars struggling through high alpine passes and the roads of France covered in sheet ice.

Graham Roberts

Ross Murphy Plumber

CERTIFYING
PLUMBER

NEW HOUSING
RENOVATIONS
MAINTENANCE

09 431 7510
021 424 252



Lance Keay Contracting Ltd

- Effluent Pond Cleaning
- Single Pass Tillage & Seeding
- Cultivation
- Fertiliser Spreading
- Hay & Silage Mowing
- 6 Ton Trailer

Taipuha RD1, Paparoa, 0571
09 431 6308 021 383 908
lance.k@xtra.co.nz

'Allo 'Allo returns to ORT

Otamatea Repertory Theatre's latest production – the much-loved British comedy, 'Allo 'Allo, opening March 21st - has a number of Paparoa people involved.

Sue Skelton, from Pahi, is delighted to be involved in the production as the pianist at René's Café. Sam Hartles is playing the role of the 'poloceman' Crabtree – 'that idiot who thinks he can speak French'. Ironical, as Sam speaks French fluently! Margie Baker, from Taipuha is a newcomer to the Paparoa district and is playing René's musically-challenged wife, Edith. Simone Sidwell from Matakohē is portraying Mimi, the diminutive maid who has been sent to the café by the Resistance, as René's bodyguard. And Sally Taylor is in charge of the properties department for the show - a huge task!



Sue Skelton, the pianist in the *Café René* with Sam Hartles who portrays Crabtree, the gendarme

'Allo 'Allo tells the story of René Artois, the French café owner in the town of Nouvion, in Nazi-occupied France during World War II. The well-loved

farce is full of catch-phrases and double-entendres, and stars many of the well-loved characters.

Directed by Maura Flower, assisted by Peter Matheson, 'Allo 'Allo promises to be a crowd pleaser. This is the first time in the director's chair for Maura, although she has directed a couple of very successful One Act Plays in recent years.

The season opens on March 21st with a special Gala opening, and runs for a series of six shows. Tickets are available now online at www.ort.org.nz, or from Tony's Lotto Shop in Maungaturoto.

Otamatea Repertory Theatre Inc.
presents

'ALLO 'ALLO

by Jeremy Lloyd & David Croft
In conjunction with NZ Play Bureau Ltd



SHOW DATES

Gala Opening Night Friday 21st March 7pm

Saturday 22nd March 2pm, Sunday 23rd March 2pm,

Friday 28th March 7.30pm, Saturday 29th March 2pm, Sunday 30th March 2pm

PRICES

Gala Opening Night Adult \$35 - Student \$20

Other Performances Adult \$30 - School Student \$15

Gold Card Holders \$25 - Groups of 20 or more \$25

Tickets available at
www.ort.org.nz
or from Tony's Lotto Shop

How to look good in front of the camera ...

The camera is an interesting object; it's something that's commonplace, used by everyone and has been around for hundreds of years, yet it can strike fear into anyone that stands in front of it. Why do we get so afraid? I believe it's the fear of the unknown.

Not knowing what we look like through the lens, not knowing what the other person sees, not knowing how to stand/sit/smile, all this makes us self-conscious in a split second. And

it's only natural, a photograph is a tangible memory of us and we want it to be the best memory possible.

Over the next few months I am going to talk about how to look good in front of the camera, to talk technically "Posing". I want to do this for you, so you feel confident, look confident and are pleased to see your amazing self in all those pictures.

I will be highlighting one or two movements each article, giving you a chance to try them out for

yourself. I'm also going to include some before and after photos so you understand what you're looking for and how much of a difference each movement can make.

I would love to hear your feedback, see your photos of how you're using these movements and answer all your questions. So please email me on feelbeautiful@sarahleestudio.co.nz and I'll be posting the best on my Facebook page www.facebook.com/sarahlee



photographer.

Keep smiling and I'll see you next time when I talk about posture and standing tall to look confident.

Sarahlee Cobb

WEBER BROS.
LTD

Builders

For Quality Custom Built Homes
and all your building needs

Ph / Fax
Ralph 09 431-7087
Gary 09 431-7498



Paparoa Lions

Paparoa Lions has had another busy summer. The caravan was out several times over January and February - Mangawhai Car Rally, Pahi Regatta, and the Paparoa A&P Show. All funds raised in the caravan go back to the community, so you can feel virtuous eating your hot dogs and chips because you are supporting the local community.

We have also been helping the Medical Society tidy up the Medical Centre section. Coming up we have the Lions Pioneer Luncheon on 14 March, and we will take the caravan to the Ruawai Centenary celebrations.

Firewood cutting has started again, so if you would like to place an order please contact Stephen 431 6148.

It is not all work though, we have dinner meetings once a month usually with an interesting guest speaker and a meal catered by one of many local groups who take the opportunity to raise some funds.

Our membership has declined recently with some members leaving the area and we are always looking for new faces. If you aren't sure about it, come along to a meeting and check us out! You will be made most welcome. For further details contact our current President Ken Chambers 431 7443.

Pets in the Valley



So you think calf rearing is a busy time and feeding pet lambs is a hassle? Well spare a thought for those who have to hand rear a foal. Unlike calves which can manage on twice daily feeding foals have a small stomach and need feeding every 2 hours for the first 5 or 6 weeks of life.

In November local farmer Mike Smales lost his lovely hunting mare with a prolapsed uterus not long after she delivered beautiful filly foal. Thankfully the foal was a vigorous young lass who was already gallivanting around the paddock with another horse while we were unsuccessfully trying to save her Mum.



We managed to collect some colostrum for her and she took to being hand fed instantly. Mike was very lucky at this stage because his wife Karen became a major part of the feed team and so the night feeds were shared. Apart from one day with a belly ache *Precious* has been a healthy girl and she has grown like a weed. Thankfully now she is eating grain as well as milk so the night feeds have been greatly lessened. Well done to her adopted parents.

I suggested Karen take her in the A&P show as a foal at foot but she wasn't keen on that idea!

Janine

Now there are even more reasons to see Dean and Reece for a wheel alignment!

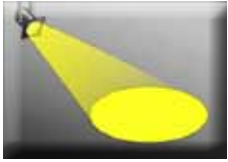
With our new state-of-the-art wheel alignment technology:

- Save money on tyres, petrol and steering joints.
- Improve your cars handling and safety.
- Reduce driver fatigue.

Garnetts Tyre Service

2 Gorge Rd, Maungaturoto. Ph 09 431 8255.

BRIDGESTONE TYRE CENTRE



Spotlight On ... Jasween Gill

For Jasween Gill, owning L'art de Beauty has fulfilled her lifelong dream of becoming a beauty therapist.

Born in Malaysia of Malaysian/ Indian descent, as a young girl Jasween expressed this interest to her adoptive parents, who frowned upon it as not being a worthy profession. Although she did not attend school and is unsure how she actually learned to read and write, she later trained as an early childhood teacher, in itself a great achievement.

Jasween's family moved to New Zealand 26 years ago, firstly to Wellington, then later Auckland. Her teaching experience was extended in places such as Mt Isa and Townsville in Australia, and five years teaching in Papua New Guinea where she learned much about life in a third world country. Her other travels have taken her as far afield as the Caribbean and Europe and despite a tempting offer of permanent employment as an early childhood teacher in Switzerland, New Zealand had won her heart and become her home. Of this country she states

"It is everything one could wish for and I am eternally grateful to live here". Nine years ago Jasween and husband Brett moved to Maungaturoto and set up BeeJays Cafe at the same time providing Bed & Breakfast accommodation from their own home. Both enjoy cooking but Jasween's speciality is baking including cake decorating. Her other hobby is cross stitch and she would love to have time to take up quilting. Jasween's calm and warm persona is reflected in the tasteful decor of the salon. She is full of praise for her assistant Andria who was employed part-time at BeeJay's when still a high school student and without her Jasween would not have purchased the salon.

After leaving school Andria studied at the Elite School of Beauty Therapy in Auckland, and was fortunate to gain work experience at L'art de Beauty



under the previous owner. This led to the offer of a permanent job here in Paparoa where she has remained for the past six years. She is passionate about her profession and like Jasween it was a girlhood dream, though in Andria's case she did have some input from an auntie who was a therapist. She feels fortunate to have been able to find her dream so close to home and at this stage of her life she intends to remain in Paparoa.

We welcome Jasween to the 'Village in the Valley' and hope both she and Andria will remain to 'Keep Paparoa Beautiful'! PP

katzkutz
quality haircuts and more!
with fair prices!

Also: foils, tints,
semi-permanents, crazy colours,
permanent waving, blow waves

Open Mon-Fri 9am to 5pm
(8pm Tuesdays)
**Call in or phone Katrina
on 09 431 9120**
Next to Well Kneaded Massage
Maungaturoto

CAR REPAIRS

**Cam's
Autos**

For all
mechanical repairs
and warrants of fitness.
We service cars,
4WDs, trailers & utes.



**Paparoa Valley Road
Ph 09 431 6620**



**NORTHLANDS BIGGEST
BED OUTLET STORE**

- 1/2 PRICE BEDS
- SECONDS-SAMPLES
- SLAT BEDS
- PILLOWS
- TOPPERS
- ADJUSTABLE BEDS
- BEDROOM FURNITURE



**STOP BY AT ELLE CEE'S AWARD
WINNING CAFÉ- WHEN YOU COME.**

**(09) 439 2243
18 Freyberg Road, Ruawai**

art Visting galleries ...



During my recent holiday I stayed in Omaha and visited three galleries near Matakana that had interesting and inspiring selections of high standard artwork.

First is the wonderful outdoor gallery of the Brick Bay sculpture trail. Arranged as an easy walk through bush, past lake and vineyards, it has a changing display of sculpture by leading New Zealand artists including large and small, interactive, kinetic and installations. Our favourites were two amazing kinetic sculptures by Phil Price that were dancing and turning in the breeze on a small hill.

"artMatakana" at the Matakana Country Park has a fine selection of paintings, ceramics and small sculptures. The standout works were two pieces by Rudi van der Pol, from Paparoa. Delicately crafted from metal, their combination of solid shapes and wire linear elements presented intricate stories that were echoed in shadows on the wall behind. Pure magic.

Vivian Gallery describes itself as a gallery of "contemporary art", and lives up to its promise. A purpose-built gallery in lovely grounds, it was showing an exhibition called "Garden Party" when we visited. We dropped in, all scruffy and dishevelled after snorkelling at Goat Island, and were embarrassed that we arrived just in time for the formal opening! It was good to see a couple of paintings by John Oxborough, from my year at art school.

Matakana is only an hour from here, so all of these are easily accessible for a day visit. You can look up the details online.

Helen Budd



QUALITY EXTRA VIRGIN OLIVE OIL

Grown on the Kaipara

Winners of Gold & Silver Awards
Oliveti Northland 2012

From Farmers Market fortnightly
Or our Olive Grove located at
46B Merril Rd (off Petley Rd)

Ph 431 7572

Calling all Rugby Kids

Paparoa JMB Rugby 2014 season is starting soon.

They are now taking registrations for any kids aged between 4-14 years- boys or girls.

Trainings are:

Thursday afternoon
4.30pm in Paparoa

Call Craig or Kirsty for more
info on 431 7028

New Format for International Car Rally

To be held from 11-13 April, the usual roads around Paparoa to be used will include only the old favourite stages of 'Brooks' (from Waipu to the famous jump over the railway bridge on Swamp Road), Millbrook (from Waipu finishing near Paparoa-Oakleigh Road) and Springfield. These stages will run on Sunday 13 April with two passes, early morning and early afternoon.

The roads in the Kaipara and Whangarei areas have been part of international rallying since the early 1980s and their fast flowing cambered nature is regarded as providing some of the best rally roads in the world – certainly the fastest gravel stages in New Zealand. It was time for a change and organisers of the 2014 International Rally of Whangarei have found exciting new roads north of Whangarei and promise competitors a challenging rally. The rallying starts on Saturday 12 April when the unknown roads are driven as they head north to all new stages of Otakairangi, Pipiwai and Marlow. The Pohe Island special stage will be run under lights on

Saturday evening and there will be several prime spectacular viewing points. Working with the Lions Clubs there will be family entertainment from mid-afternoon. Further information can be found on the www.rallywhangarei.co.nz website or follow the event on Facebook.



In The Kaipara Garden ... the answer lies in the soil

Gardening in February has its problems with the cracks in the lawn and the crickets hiding therein! Those large crickets are imports from Australia – many years ago- but the little tiny ones are our own home-grown NZ variety and unfortunately they seem to be the ones that get into amazingly small spaces (under doors even). Hopefully this year will not be one of those years where they multiply into plague proportions. It's a pity Kaipara has to be the driest area in the north this summer.

I wonder how many of you saw the amazing display of beautiful dahlias at the Paparoa Show. It has made me determined that next year mine will be better cared for. I know the trick is in feeding and watering and making sure they are staked properly. They are really a beautiful flower and great for picking but sadly no nice perfume. The colour range and size of flower is amazing. I am planning a raised bed with as much wind protection as I can manage in my very windy garden. The long flowering season and the fact that you have them year after year, if you take care of the tubers through winter, makes them a real garden asset. Maybe some of you may like to try your luck next year too?

In the vegetable garden this year the tomatoes, although they have produced a reasonable crop, have not looked their best. The leaves look to have suffered from a fungi condition called verticillium wilt – which is transferred through the soil. The more modern varieties in many cases have been selected for resistance to this problem whereas the heirloom varieties may be more vulnerable. The answer to this problem is – don't grow tomatoes in the same soil two years in a row – in fact leave about 4 years between growing them in the same garden!! Also no stresses: no water shortages and try to keep the leaves dry when you water.

Now to get down to planting my last crop of dwarf beans for the summer and planning what to grow from seed for the winter. It's also time to plant bulbs. I have been given some freesia bulbs and bought some iris bulbs (again from the Show!).

Stella Clyde

MATARUA GOLF CLUB



*The MATARUA GOLF LADIES
are looking forward to
teeing off their
2014 season on
Tuesday March 11th
at 9.30am*

*Any ladies that would like to
come and join in will be
made most welcome.*

Play is over 9 or 13 holes.

*We can help you learn this enjoyable
sport and even loan you some golf
clubs. Also Mens Club Day is on
Sundays and new members
are most welcome.*

**Enquiries: Glenda Weber 431 7170
Trish Sterling 431 7079**



and PIZZA

Monday-Friday from 9am

Call Corina and the team | Phone 09 431 9002

**In the 4 Square
building Maungaturoto**

- Delicious Hot Homemade Pies
- Pizzas with a full range of favourites & Gourmet pizza
- Pastas

Paparoa Tai Chi

Take the stress out of your day - come home relaxed after Tai Chi

At the AGM held on 18 February 2014, Paparoa Tai Chi have made changes to both the venue and time of sessions.

With the departure of instructor Andrew Young, Joanne Crutcher will now lead Tai Chi each Tuesday morning at 11am at the Sports Pavilion, Paparoa showgrounds. People may remember Joanne as the wife of the late George Crutcher who instructed Tai Chi previously in Paparoa.

Tai Chi is a gentle ancient Chinese

exercise - "The Art of Moving Meditation for Physical and Mental Wellbeing."

It is beneficial to all people, and especially to the elderly for agility, balance and movement ("use it or lose it"). Many doctors recommend Tai Chi as it is a non-stress and non-impact exercise which may prevent, and certainly

benefits, arthritic joints.

Sessions cost \$10 per person. If more than one person from a family attends then each extra person is just \$5. Anyone can give it a try. Tuesdays 11 am, Sports Pavilion. *See you there.*

For more information call Graham Marks on 431 7545 or James & Shirley at 431 6408.

Cameron Philips CABINETMAKER

Matakohe



- Kitchens
- Custom Furniture
- Furniture repairs & restoration
- Custom run mouldings
- Stairs & Timber Doors
- Residential & Commercial Joinery

QUALITY WORKMANSHIP

09 431 7579

cgandsmphilips@gmail.com

BATTENSBY Bros.

CONTRACTING LTD

- Ground Cultivation • Silage and Hay
- Fertiliser Spreading • Fencing



Glenn 021 983 734 Ross 021 983 594

Ph: 09 431 6186 Email: battensbybrothers@xtra.co.nz

KAIPARA LIFE - Making Memories

It was a picture perfect summer's day. A day just made for the making of memories. Down at the beach the tide was almost lapping against the green verge where the pohutakawas spread cool pools of shade for us to shelter from the sun - a day when the peerless blue of the sky was captured in salty rippling reflections.

Our family was there - some four generations - spread out along the shore slipping from cool water to scorching sun and then retreating briefly into the shade. There was a regular pattern to this. Parents would swim just far enough out to escape their offspring for a few peaceful minutes while the older children followed the age old patterns of kids in the sea - splashing and shrieking and testing their breath-holding skills.

This left me - the 'older' member of the group in the company of the very young. A role I was more than happy with. I floated in the shallows entertained by a trio of tiny tots who were all determined to outdo each other, and impress me, with their aquatic accomplishments - shouting 'Look at me Nana Kistene!' as their plump little arms, legs and occasionally faces splashed in and out of the water.

As I floated in their midst a memory came to me from my childhood. It was of sedate matrons content to float majestically just a few metres from the shore. This was a complete puzzle. Why would you go to the beach and then do nothing? Everyone surely knew that beaches were for swimming and diving and splashing your way to an end point of happy exhaustion.

Now I realised I was one of those ladies and, reveling in the ease of my salt water buoyancy, enjoying my grandchildren at play, I finally understood them.

Christine Yardley

RUAWAI Centennial

Just over 100 years ago a little place by the name of Shag Creek was renamed; and so Ruawai was established. Come along and help Ruawai celebrate this milestone with a fantastic weekend program.

Friday 21st March: Registrations at the hall from 5pm, then meet and greet friends, and enjoy photo displays of Ruawai and Districts past and present.

Saturday 22nd March: The parade from 10.30am leads on to the official opening. Then enjoy the rest of the day watching chainsaw carvers, wood chopping and live displays including vintage machinery. There'll be games for young and old - just some of what will be on offer during the day. Take a bus tour around the district or climb aboard "Kewpie Two" on the river. Dinner & entertainment from 6.30pm onwards. Tickets essential.

Sunday 23rd March: Thanksgiving celebration service is at 10.30am at Ruawai College.

Visit ruawaicelebration.wordpress.com for more details or contact Tina at 021 151 1569 crewba@xtra.co.nz or Peter at 021 776 716 petertf@xtra.co.nz

We look forward to you joining us at the celebrations. Be sure to register by 16 March.



Birt & Currie Surveyors Ltd



Local Phone
09 280-9591

Timely,
friendly &
personal
service

info@landsurveyors.co.nz
www.landsurveyors.co.nz
PO Box 120 Paparoa 0543

Jane Short

D.Pod.M MchS
Registered with Podiatrists Board NZ
Member of S.O.C.A.P. UK
Registered with H.C.P.C. UK

FOOTCARE
PODIATRIST

09 431 7188

020 4022 65998

- Home Visits

- Maungaturoto Coast to Coast Medical Centre

- Nursing Homes & Hospitals

Otamatea Day Camp - Tues 22nd - Thurs 24th April

We have set the dates for Otamatea Day Camp 2014 - for children of the Kaipara (and some further afield). So mark those calendars! If you've not had the whole Day Camp experience before, this is what you've been missing out on.

Otamatea Day Camp is run by the local churches and has been running for 11 years. It comprises 3 days in the great outdoors with about 150 other kids and a whole bunch of teen

leaders and the countless adults needed to run the event. You will experience ... a Bible based tent programme and songs, bush hut building, campfire building, cooking your sausages and marshmallows on the campfire, hiking, watersliding, games. And then you also get to choose two electives such as archery, dam building, various crafts, sheep shearing, flax canoe making, firearms safety, woodcraft, making things from cans ... the

list goes on. Buses will get you there and back each day or you can come by car out into the back of beyond!

So does this sound like something you'd like to be involved in? Then keep an eye out for registration forms at the end of March. Your school office (Matakohe, Paparoa, Maungaturoto and the Christian school) will have the forms as will Paparoa Drapery,



and Dreams, or you can ring Ruth Rosser 431 8491 or Debbie Blythen 431 6892. So we hope to hear from you in the not too distant future.

Keep smiling, Debbie

Heritage Hotspot

Paparoa's First Tennis Courts



Opening Day at the new tennis courts at the Showgrounds

The first tennis courts in Paparoa were sited on flat ground just before Slater's Bridge, where it carried the road across the creek and on to Trounson's Hill.

The tennis club was formed in 1910 and sometime after this moved their headquarters to the showgrounds where they established new courts.



The Otamatea Mounted Rifles on a training exercise with their horses tied up outside the tennis courts at Slater's Bridge, pre 1910

Mary Stevens

Paparoa A&P Show Gets First Class Service



Martyn Jeggo, EFTPOS NZ Field Service Representative arrives at the Showgrounds

With one week to go before the Paparoa Show the Show Committee needed to quickly finalise the provision of EFTPOS machines. On Friday 24th January the Treasurer, Gary Christie, rang Linlin Zhang at ANZ Merchant Business Solutions who quickly put him in contact with Gina Rawlings at EFTPOS NZ based in Wellington. Operating as a team they had everything in place by lunchtime and a special delivery of the machines to Paparoa was set up for the following Thursday.

Martyn Jeggo, the EFTPOS NZ Field Service Representative came up from Auckland especially to deliver and test the equipment. He found that the signal received at the Paparoa Showgrounds was stronger than many parts of Auckland. Thanks ANZ and EFTPOS NZ – great service.

LANDSCAPE SUPPLIES



Powell Contracting Ltd

OPEN:
Weekdays
8am to 5pm
Saturday
8am to noon

Diggers and Trucks for all your Earthwork & Cartage requirements

Now Stocking

- Daltons & Watkins:
- Potting Mix
- Compost
- Bagged Shell
- Pebble and Scoria
- Bark & Fertiliser



We Also Stock

- | | |
|---------------|-------------------------------------|
| Bulk Compost | Timber |
| Topsoil | Posts |
| Sand | Battens |
| Riverstones | All grades of metal Nails & Staples |
| Lime Chip | Pro-max water tanks |
| Blue Chip | Aqua water tanks |
| Bark | Drain coil |
| Post Peelings | Culverts |
| Woodchip | Hurricane Gates |
| Builders Mix | Full range of |
| Cement | StrainRite fencing supplies |
| Easi-crete | |



Powell Contracting Ltd, 2088 Paparoa Valley Road, Paparoa
Ph/Fax 09 4316 331

Hukatere School Reunion

Saturday 15 March, 11am, in the Hukatere Hall

Open to all past pupils, teachers, parents and interested people, The Hukatere School Reunion will take the form of a potluck lunch, b.y.o. plus glass if desired, tea & coffee will be offered.

The School opened in 1897 after being built by Mr. L.F. Cooksey for £127. The school house was built the following year. The first teacher was Mr. N. Law followed by - in seemingly quick succession - Mr. H.K. Burns in 1898, Mr. T.E.A. Mackay in 1900, and Mr. L.S.A. Meiklejohn in 1905. It is said that in 1915 when Mr. Dempsey was appointed as the new teacher he was overjoyed to eventually arrive at the school 'at the end of nowhere' after a tiring trip by train, boat and buggy (over the last five miles). The school stood in seclusion several hundred yards from a winding dirt road close to the water and in 1917 it was moved up the hill

to its present site, being more central to the community and by then, better roading.

Of the pioneer families still in the district, only the Reyland, Hamlin and Weber families are known to remain. Foundation pupils were Drummond, Le Noel, Weber, Hansen, Adams and Martin families. The school roll fluctuated and the last Principal, Mr. B.W. Thomson reported in May 1977 that after a term of continued indecision as to the school's future, the last 15 pupils had to be resigned to schooling elsewhere.

It is hoped to have a great re-union of many past family



Hukatere School in 1925



The deserted school in 1978 after it closed in May 1977. Note the Hukatere Hall behind.

members and pupils; it is said there were many bright, receptive pupils with enquiring minds who passed through the doors! Contact Shona Hamlin for further details, 09 431 7221.

Letters from the Old Post Office



A few of my favourite things

Some people count sheep to get to sleep, some count backwards from one thousand (confusing I would have thought). However, I have started to count my favourite things.

When I first started it took a while to remember them, which is pretty sad. It is also not a quick way to induce sleep, partly because so much time is spent worrying that your life is so small and petty that you can't even bring to mind the hundreds of things that should bring you joy. Then, there is the worrisome thought that should things be part of your life's philosophy? All of which can reinforce the wakefulness that you are trying so desperately not to achieve. Of course, during actual daylight hours I seem to have no trouble feeling soporific.

But, now I do have a list. I can lie in bed and remember: Tea in a pretty china cup (no surprise there, although I think it is classified as both a thing and an experience), the wind on water and the way it ruffles tussock-grass hair (definitely an experience). The chook chook noise the hens make when they have grubbed up a really tasty bug (an experience). My children phoning and not wanting something ... (how do we classify that)? The man in the shed venturing out and actually sniffing a rose, tentatively suggesting that yes, it does smell quite nice.

Then, there is the early morning sun with its promise of a beautiful day. Naturally, here that could mean hail and thunder at lunchtime, still it is the hopefulness of it I like. The cold shock of fresh river water and the way your skin feels newly shriven ...

My list has started to grow and now I can be awake for hours happily entertained re-running images and memories of so many experiences.

I am still wakeful but at least I do not feel such a sad, lacklustre person who can't even bring to mind things that I love.

Deb C

PLUMBER

Kaiwaka to Ruawai

- 30 years' experience
- All plumbing services including new housing and maintenance



ANDREW KENNY
ph 027 642 8320

Paparoa Press PP
CLASSIFIED ADVERTISING

Bee Swarms

My bees are swarming. Please help me. If you see a swarm, phone Mike 431 6008

Temporary Fence Panels

Long/short term hire
Great for building sites, events & waterways
ph Jimmy 021 932 132
09 431 6030

*"If you can't be kind,
at least have the
decency to be vague."*

Keith the TV Guy

Freeview digital TV transmission is here



16 TV and
9 Radio/Music
channels are
currently being
transmitted.

Satellite dishes,
decoders, cable
etc., supplied
and installed.

09 431 7143
or 021 239 4251

The Glass Guy



Phone Colin
09 431 6595

KAIWAKA MOVIES

Movies are showing on the big 7m-wide screen only 25 mins away in Kaiwaka! The hall has been refurbished since its return to community ownership and a digital projector installed. A top sound system and comfy chairs are proving very popular plus the ice-creams at half-time! Screenings are: Sundays 2pm and 1st and 3rd Fridays at 7.30pm. Kids under 16 are \$5 and adults \$10. Family pass \$25. On 7th March 'Gravity' and on 21st 'Captain Phillips'. Info from Ad Clarijs- windmillkiwi@gmail.com

Paparoa Motor Camp



check out
our
self-contained
cottages

- Tent and Van sites, Cabins, Kitchen, Showers ● Internet available ● Public Laundry facilities ● Pump-out Station

Ph 09 431 6515
cnr SH12 and Pahi Road, Paparoa

OUT & ABOUT around the District ...

Our condolences go to the family of Gordon Fergusson of Matakoho who passed away recently. Gordon saw war service and was involved with a number of organisations in the district. Also to the family of Barry Morrison, formerly of Pahi.

The Paparoa Farmers' Market celebrated 7 years of operation and continues every second Saturday with good crowds and a great atmosphere. Get along to the market for great produce and goods.

The Paparoa Medical Society asked Chemwash Warkworth to clean the doctor's residence and clinic. Unfortunately Chemwash staff misunderstood the instructions and instead cleaned the Old Hospital next door, a building three times as big! But the Society can recommend Chemwash for their service and friendliness. And the owners of the Old Hospital will no doubt recommend Chemwash for their free service! The Medical Society would like to thank Paparoa Lions Club for undertaking a recent working bee to trim the trees

beside the path leading up to the medical clinic. A donation to Lions funds is in the pipeline.

Matarua Golf Club's 2014 season kicks off on the 11th March with a Ladies Day - see their ad on page 10. Men's Club Day is on Sundays. New members are always welcome.

Congratulations to Elva Heath on reaching the age of 90. Family and friends celebrated in grand style. Elva's granddaughter travelled from the UK to attend, and youngest daughter Dianne came from Australia.

Music In The Garden - Ruawai Lions Club are holding this event at Evan & Brenda Robinson's place at 143 Dunn Road, Ruawai on Saturday 8 March, 3-6pm. Featuring *R&B Connection*, *Otherwise Fine* and more. Proceeds go to the Northland Electricity Rescue Helicopter fund. For further info phone Dorothy on 09 439 2557, or jdsimpson@slingshot.co.nz

Ruawai Lions Club Annual Charity Auction is on Saturday 15 March at Kaipara Kumara forecourt,

viewing 9.30am, Auction starts 10am. Sponsors' products for auction include farming items, antiques, furniture, electrical appliances, toys, books, bric-a-brac etc. Food and refreshments available. Also a trading table from 9am. Contact Jim and Dorothy Simpson 09 439 2557.

Recent nuptials - Chelsea Smith and Nick Cullen, son of Greg and Noeline Cullen of Maungaturoto, were married on Sunday 23 Feb. The ceremony took place at

the water's edge on Ruth & Bill Smellie's Pahi peninsula property.

The removal of the dangerous poplars on the riverbank in the middle of the village has been delayed while Kaipara District Council obtains the necessary approval from the NZ Transport Agency to work on their land. There are public safety issues with felling trees so close to the State Highway.

Send your items of news to us at: paparoapress@orcon.net.nz PP

Paparoa Store

Proudly Supporting Paparoa

OPEN 7 DAYS

Monday-Saturday 7am-6pm

Sunday 9am-5pm



We stock a great selection of
CONFECTIONERY, ORGANIC, DELI, MEAT,
FRUIT, VEGES, FROZEN GOODS, BEER, WINE
and a wide range of grocery items at excellent prices

DVD's \$1 to \$8 per night
EFTPOS NZ HERALD POST CENTRE

Phone / Fax 431-7320
Cnr. Franklin Road and State Highway 12

Ruawai Homekills

Full service slaughtering & processing of Beef, Sheep, Pigs, Deer, Goats

All Beef aged

**Salami ▲ Bacon ▲ Ham ▲ Sausages
Hamburger Patties**

Traditional Manuka wood smoked Bacon, Ham & Salami

Over 25 years experience

For prompt & professional service contact Wayne or Annette

09 439 2020 • 021 401 934

ruawaihomekills@gmail.com
Information packs available

Covering the Kaipara and Whangarei regions

WHAT'S ON - MARCH 2014

Anglican Church Sundays 10am
Ararua Church 10.30am every Sunday, All welcome ph 431 6622
Art Group Paparoa 1st Sun in month, Helen Budd's Studio, ph 431 6192
Art Studio, Ruawai Mon 10-12noon; Tue 7-9pm, ph Frances 439 2554
Arty Farties • Summer Markets 9am-noon, opposite Village Green
 • Thur/Fri in the 'Tile Shed' ph Anne on 431 6229 to enquire
 • Crafty Kids Club alt Saturdays 10-2pm, Rm 5 Paparoa Primary School
 • Beginners Patchwork Group, Mon 7pm, Te Pahi River Drive
Badminton Thurs, years 5-11, 5.30pm; older/experienced 7pm, Paparoa Hall
Crafternoons 1st & 3rd Wed in month, 1-4pm, Tinopai Hall ph Lyn 431 6090
Exercise to Music Tue 10.30am Paparoa Hall \$5 ph Rose 431 7418
Farmers' Market Fortnightly Sat 9-noon, Village Green Mar 8, 22 Apr 5, 19
Fire Force 1st & 3rd Monday in month 6.30pm Depot Rd ph Cohan 431 6668
Gardening Club 2nd Wed of month, ph Lea 431 6296
Grey Power Last Wed in month, 2pm, Hall next to Resthome, M'gto
Indoor Bowls Paparoa Hall ph Loraine 431 7290 or Robyn 431 7306
Kaiwaka Movies 7 Mar 'Gravity'; 21 Mar 'Captain Phillips' 7.30pm
Library Mon 1.30-4.30pm, Wed 10am-12noon, Thu 1.30-4.30pm, Fri 9.30am-1pm
 open all Farmer's Market days - alternate Saturdays 9.30-1pm
Line Dancing Thurs 10.30am Paparoa Hall ph Rose 431 7418
Mainly Music Wed 9.30am Paparoa Comm Church, ph Rebecca 431 7550
Music In The Garden Sat 8 March, 143 Dunn Rd, Ruawai (see O&A page 14)
Music Makers 2nd Tues of month 7.30pm @ Cruiser Bar & Grill
Northtec Sustainable Rural Development Thursdays, Paparoa Community Church, Hook Rd, ph Heidelind 021 0230 6465 / Miriam 431 7106
Otamatea Quilters 1st Tues of mth 7-9pm & 3rd Mon 10-12noon, Paparoa Hall ph Lyn 09 439 2262
Paparoa Community Church 10.30am every Sunday, Hook Road
Paparoa Lions Dinner Meetings 3rd Mon in month 6.30pm, Paparoa Hall
Paparoa Playcentre Tue & Fri 9.30-12noon Visitors welcome ph Tina 021 033 5128
Paparoa Plunket Society Coffee Group 1st Tue/month, 10am Franklin Rd
Paparoa Primary School Term 1 Jan 28-Apr 17; Term 2 May 5-July 4; Term 3 July 21-Sep 26; Term 4 Oct 13-Dec 11
Paparoa St Marks Anglican Church 2nd & 4th Sundays, 10am, Hook Rd
Paparoa Toy Library Wed 10.30-1pm, Paparoa Comm Church, Hilery 431 7330
Pioneer Luncheon Friday 14 March, Paparoa Hall, ph Pete 431 6822
Ruawai Lions Auction Sat 15 Mar, 9.30am Kaipara Kumara forecourt see pg 14
Rugby - JMB 4-14 years, Thur 4.30pm Paparoa Showgrounds ph 431 7028
Sports Pavilion - Functions venue, ph Vickie Owens 431 6432 for bookings
St Mary's Catholic Church 10am Wed, 6pm Sat, Maungaturoto
Tai Chi Tues 11am, Sports Pavilion, Showgrounds ph Shirley 431 6408
Table Tennis Tues 7.30pm, Sports Pavilion \$2 Pete 431 6822
Tennis Adult Sessions Tuesdays 6pm, Junior Saturdays 9.30 & 10.45am ph Sue Skelton for more details 431 6224
Ukelele Players Beginners / experts, Thu 5.15pm Matakoho, ph Dennise 431 7012
Waka Ama Tues & Thur evenings 5pm, Sunday 10am, Pahi Domain
Yoga for Body & Mind Paparoa Hall Tues 12.30pm & Thur 5.30pm. Matakoho Hall Mon 11.30am & Wed 4pm; M'gto Otamatea High School Tues 4.30pm. (see details pg 7) ph Jenny 09 280 9694 / 021 114 3370, Facebook/Kaipara Yoga
 PLEASE UPDATE US WITH YOUR DETAILS: paparoapress@orcon.net.nz PP

Busy Start to School Year at Paparoa

Paparoa Primary School has started off the year with a bang. Room One has gone on camp for three days and enjoyed visiting the Jack Morgan Museum at Hukerenui and the Whangarei Gliding Club at Puhipuhi. The children are learning about inventions and these two special visits as part of camp helped them to look at how inventions have changed over time, how they have evolved, and how they are used in everyday life. While on camp Room One also visited Hukerenui Primary School, played scatter ball and got to meet with other country children.

At school everyone is busy with their invention ideas. Room Three have the concrete truck turning up soon to make a new pathway needed to link the astro turf with the playground.

Room Two are looking into a hen house, making a deck outside their class to house their new woodwork table and tools, and extending their worm farm. Room One are going to be hands on making their goat house, sandpit tool box, woodwork table, and figuring out how to best utilise our land.

Every child is busy with their project and can't wait to plan and produce their invention. "It is so exciting to see everyone so engaged in their learning" Mrs Kim Tavinor, Principal said. "The children are keen to come to school every day and can't wait to see their ideas flourish. It's so rewarding to be a part of and so much fun."

A1 Cats Boarding Cattery

Ken & Faye
Subritzky
548 Pahi Rd



Ph 09 431 7477
www.a1cats.co.nz

"No job too small"

Ross Latto



**LICENSED
BUILDER**

House construction, alterations,
renovations, general repairs

Ph 09 431 7442 021 772 766
PO Box 17, Paparoa

Place your Ad here

reaching your community
for only \$25/month

all proceeds from advertising
go toward community projects

contact Paparoa Press
09 431 7144
paparoapress@orcon.net.nz

Community Directory

EMERGENCY: FIRE ■ POLICE ■ AMBULANCE dial 111

COAST TO COAST HEALTH CARE

Maungaturoto Medical Centre: 8am-5pm Mon-Fri 09 431 8576
 Paparoa Clinic: Doctor Tue + Fri 8.30am-12.30pm..... 09 431 7222
 For urgent after hours medical service (Wellsford)..... 09 423 8086

DISTRICT NURSE Dargaville Hospital 09 439 3330
 Healthline - 24 hour service..... 0800 611 116

HOSPICE KAIPARA Dargaville Hospital 09 439 3330

KAIPARA DISTRICT COUNCIL Helpline 0800 727 059
 Mangawhai Office..... 0800 100 388

LINKING HANDS Health Shuttle Service, Maungaturoto 09 431 8969

LIONS CLUB PAPAROA Secretary Alistair Banks 09 431 6373

MAUNGATUROTO PHARMACY 09 431 8045

MAUNGATUROTO REST HOME 09 431 8696

OTAMATEA COMMUNITY SERVICES Community House 09 431 9080

PAPAROA LIBRARY Membership free-of-charge, Wheelchair access
 Mon 1.30-4.30pm, Wed 10am-12noon, Thu 1.30-4.30pm, Fri
 9.30am-1pm. Open Market days - alternate Saturdays 9.30-1pm

PAPAROA PLAYCENTRE Vanessa 09 431 6731, Renee 09 431 6336

PAPAROA PLUNKET Cynthia Keay..... 09 431 8187
PLUNKET Helpline 0800 933 922

PAPAROA PRIMARY SCHOOL 09 431 7379

PARENT PORT Inc. free help for families Linda 09 425 9357

PHYSIOTHERAPY Lyndsay Bargh Mon/Wed/Fri from 8am...431 8576

PODIATRIST / FOOTCARE Jayne Short 020 4022 65998 / 09 431 7188

PUKE ARANGA TE KOHANGA REO 09 431 7089

YOUTH & WHANAU FOCUS South Kaipara, Rose 09 431 7418

PAINTER**Dave Stephenson**

- Interior
- Exterior
- Roofs
- Mould spraying
- Waterblasting

No job too small

09 431 6623
027 490 3522

**HOME HEATING
INSTALLER**

**Flue sweeps
Repairs
Installations**

Ken Subritzkyfrom
Dargaville to Wellsford

09 431 7477
021 121 4879

kensub548@gmail.com

**FRESH & FROZEN
Oysters, Mussels,
Fish & Kina**

10am - 5.30pm
 1994 Paparoa Valley Rd
09 431 6089

**Luscious
blackberries**

have been tempting pickers this year along roadways and walkways - something we have missed over the past few years.

These two young visitors were loving the refreshing flavour and juiciness along their walk.

**MOTHER
MARRIES
DAUGHTER**

Marriage Celebrant Dennise Brownlie had the privilege of officiating at the marriage of her daughter Topaz to Tim Johnson during January.

The venue was at water's edge, Waikere Beach, near Pouto. It was a perfect summer day on the Kaipara. The reception was held at Pouto in the old Customs Building, and was altogether quite magical.

Although the scene was as beautiful as if from Tahiti, it was not there! The couple will be living in Auckland.

**Local Line Dancing**

We have a new tutor for line dancing so we are up and dancing again.

Line Dancing is great fun, good exercise and excellent for balance and for the brain.

So come along and join in the fun at the Paparoa Hall, Thursdays, 10.30am.

For further information - contact Rose on 09 431 7418

**BREAM BAY
DESIGN & PRINT™**

Print Smart - Print With Confidence

**Printing & Graphic Design
Copying & Binding
Carbonless book specialists
Labels & much more...**

design@breambayprint.co.nz
 www.breambayprint.co.nz

FREEPHONE 0800 432 898

**NO GIMMICKS, NO FUSS, JUST A QUALITY
PRODUCT AT THE RIGHT PRICE
AND ON TIME!**

Kevin's Shed
panel beating & repairs*Just ask*

027 642 4991
09 431 6444



3245 Paparoa-Dakleigh Rd

**REX BROWNE
CONTRACTING**

- Limestone & Metal Cartage
- Truck & Digger Hire
- Farm Roads
- Earthwork & Dams
- House Sites & driveways
- Wrapped Silage & Hay
- Cultivation
- Fencing & Mulching



**Maize
Silage
planting &
harvesting**

☎ 09 431 7556
☎ 021 720 590

5 Questions for ... Frank Wu

PP asked Frank Wu the proprietor of Paparoa Store about his life before he came to Paparoa:

How long have you been in Paparoa? *Almost 3 years.*

Where did you come from? *I came with my family from China in 2002 but we have lived in Auckland, then Whanganui and then back to Auckland before buying the Paparoa Store.*

Why did you choose Paparoa as a place to live? *We wanted somewhere close to Auckland as our children are at school there. For Chinese, education of our children is very important. But we prefer to live in a smaller community which is friendly and relaxed. That's why we like Paparoa.*

What were you doing before you came to Paparoa? *In China I qualified at university as an oceanographer but when I came to NZ there was no opportunity to follow that career. For a while I packed vegetables for a supermarket supplier before buying our own business. In Whanganui we had a dairy, then we moved to Maraetai where we had a grocery store. We sold that to come to Paparoa.*

What are you doing now? *I am busy running the Paparoa store. Although we are open seven days it is much more relaxed now than Maraetai where we were open until 10pm.* PP